

Содержание

- Бюллетени от 17.10.2007
 - проблемы включения
 - синий экран
- Бюллетень от 13.09.2007 (старый)
- Бюллетень от 19.10.2007 (модель R60)
 - использование памяти нового вендора
A-DATA

При воздействии на корпус снизу около вентиляционных отверстий ноутбук не запускается или происходит отключение

SAMSUNG

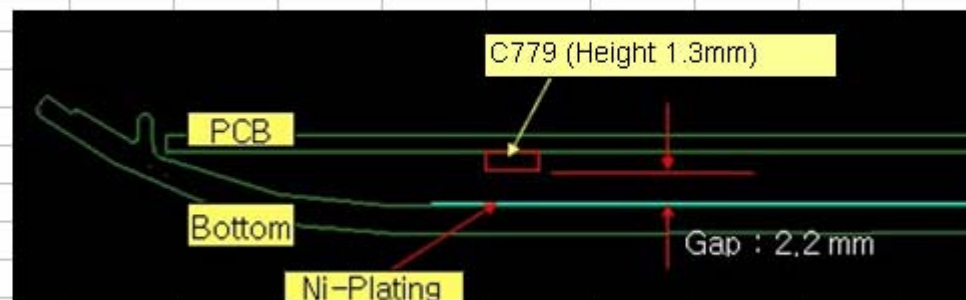
Service Bulletin

Product :	Note PC	Bulletin No. :	07-HW-10-02
Model :	R70	Bulletin Date :	2007-10-17
Operation Subject :	ASC (<input type="radio"/>) Call center (<input type="checkbox"/>)	ECN Date :	-
Service Type :	Return w/o repair (<input type="checkbox"/>) Scrap after swap (<input type="checkbox"/>) Rework (Repair) locally (<input type="radio"/>)		
Subject :	No power. add insulator on Bottom		

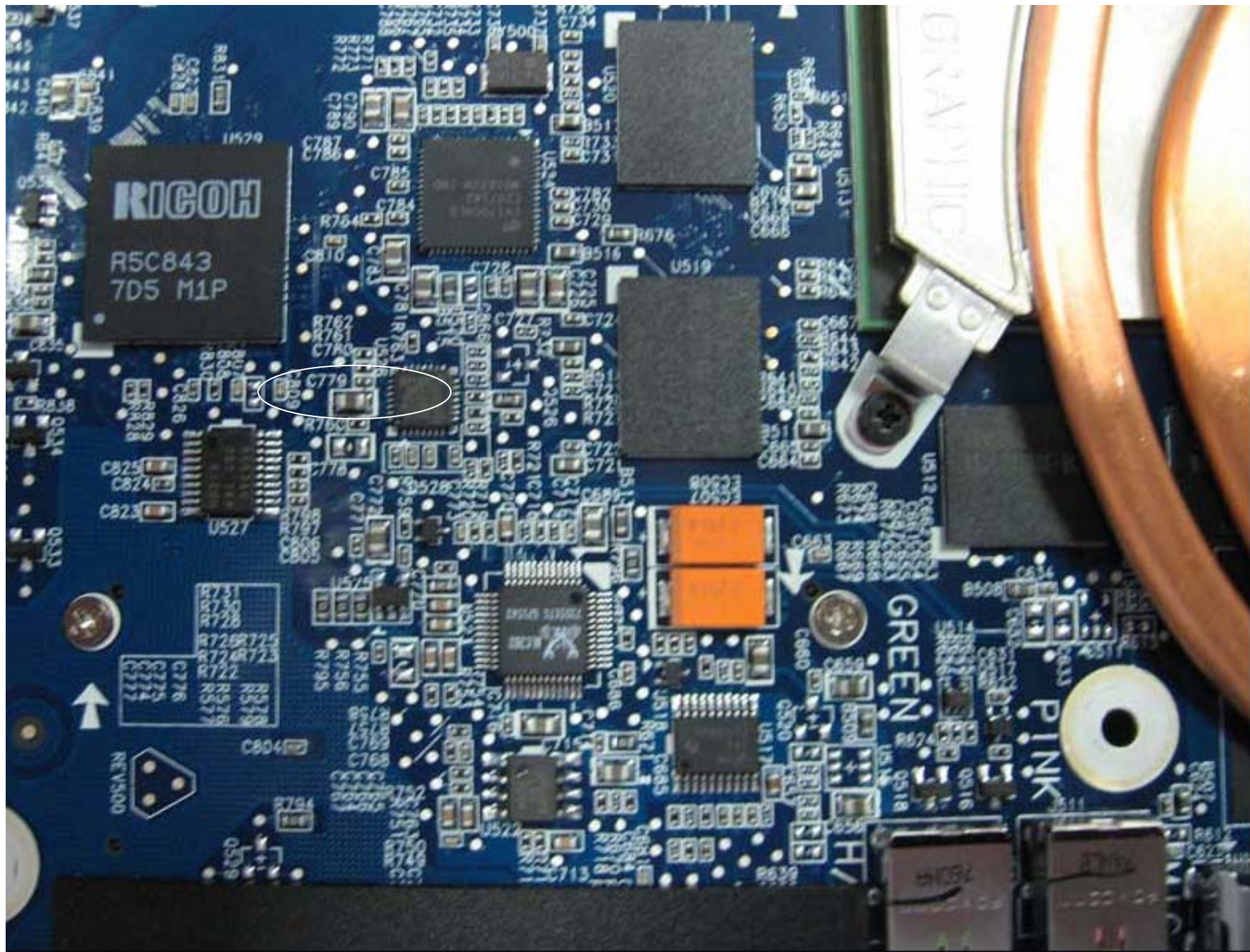
Background : ◆ When pushing Bottom plastic near vent holes, possibly no power happens.

Cause : ◆ Bottom plastic Ni-plating area touches C779 on motherboard.

При нажатии на корпус металлизированное покрытие корпуса соприкасается с C779



<Bottom plastic touches C779>



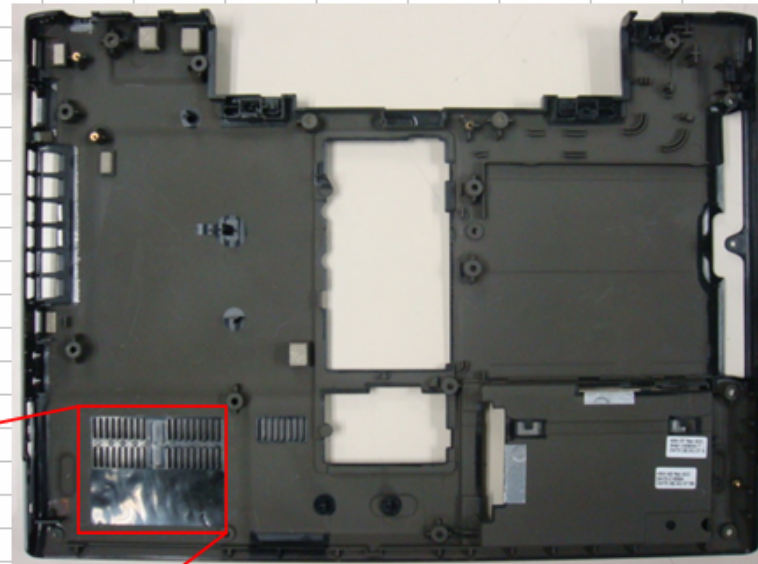
◆ **Solution**

- Add an insulator on Bottom plastic (applied to manufacturing as from 4th Oct.)

Insulator PN : BA81-00456A

Insulator size : 10 x 27mm, t = 0.15mm

Attach Insulator (BA81-00456A)
On Unit-Housing_Bottom(BA75-01856A)
Unit-Housing_Bottom(BA75-01856B)



EMI Painting Masking same line



No Vent Hole blocking

BA81-00456A

Place Insulator along Thermal vent hole
But be careful not to cover the vent holes by insulator

<Add insulator on C779>

◆ **Service Center & PCB Repair Center guide**

- Check the manufacturing month

. Manufacturing month : Check 8th digit (production year) & 9th digit (production month) of product S/N on the bottom.

If the system **manufactured before Nov. '07**, add an insulator on bottom as the picture above.

8th Digit	X	Y	A, L	P								
Year	2004	2005	2006	2007								
9th Digit	1	2	3	4	5	6	7	8	9	A	B	C
Month	Jan	Feb	Mar	Apr	May	Jun	Jul	Aug	Sep	Oct	Nov	Dec



Service Bulletin

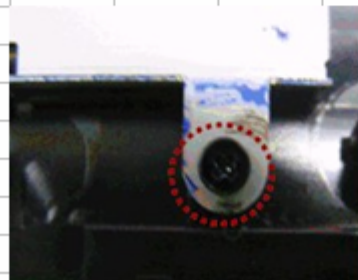
Product :	Note PC	Bulletin No. :	07-HW-10-01
Model :	R70	Bulletin Date :	2007-10-17
Operation Subject :	ASC (<input type="radio"/>) Call center (<input type="checkbox"/>)	ECN Date :	-
Service Type :	Return w/o repair (<input type="checkbox"/>) Scrap after swap (<input type="checkbox"/>) Rework (Repair) locally (<input type="radio"/>)		
Subject :	Blue screen reported. add insulator on MBD		

Background : ◆ When pushing top plastic on the right of touchpad, possibly system reboots after blue screen.

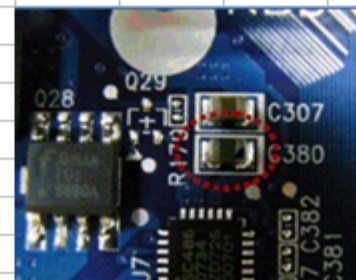


Cause : ◆ **Touchpad fixing screw on top plastic touches C380 on motherboard.**

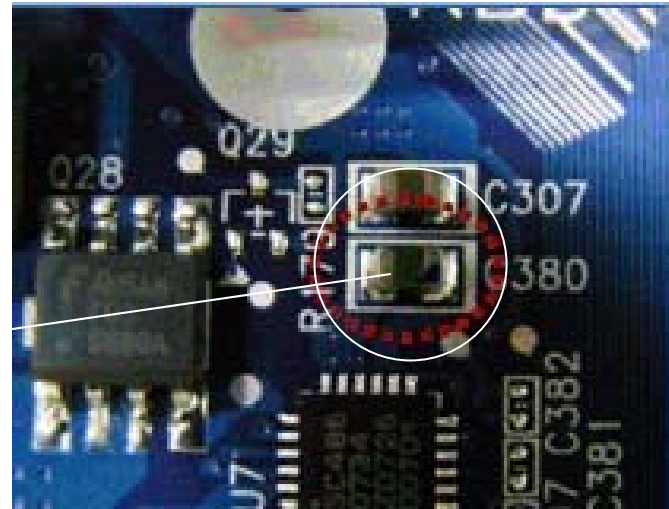
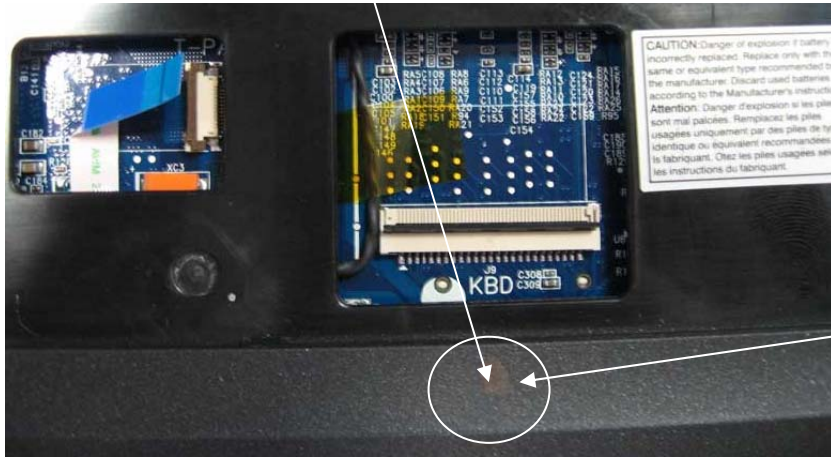
- Gap Spec. between touchpad fixing screw and C380 is 0.4mm
- Screw head, Capacitor, Guide Rib have 0.1mm allowance each, therefore in the worst case there is only 0.1mm gap between touchpad fixing screw and C380



<Touchpad fixing screw>



<C380 on MBD>



Решение

◆ Short term solution

- Add an insulator on C380 (applied to manufacturing as from 10th Oct.)

Insulator PN : BA81-04452A

Insulator size : 10 x 27mm, t = 0.15mm



<Add insulator on C380>

◆ Long term solution

- Extend Top plastic guide rib length (2.7mm → 3.0mm) to keep the gap between the screw and C380.

◆ Service Center & PCB Repair Center guide

- Check the manufacturing month

. Manufacturing month : Check 8th digit (production year) & 9th digit (production month) of product S/N on the bottom.

If the system **manufactured before Nov. '07**, add an insulator on C380 as the picture above.

8th Digit	X	Y	A, L	P								
Year	2004	2005	2006	2007								
9th Digit	1	2	3	4	5	6	7	8	9	A	B	C
Month	Jan	Feb	Mar	Apr	May	Jun	Jul	Aug	Sep	Oct	Nov	Dec

R70,R40+

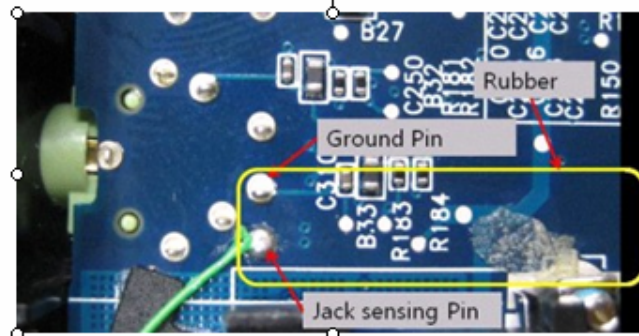


Service Bulletin

Product : Note PC	Bulletin No. : BA020070B35
Model : R70, Q40+	Bulletin Date : 2007-09-13
Operation Subject : ASC (<input type="radio"/>) Call center ()	ECN Date : 2007-08-22
Service Type : Return w/o repair () Scrap after swap () Rework (Repair) locally (<input type="radio"/>)	
Subject : Speaker no sound	

Background : ◆ Speaker no sound

Cause : ◆ Rubber which fills gap in PCMCIA slot is conductive, it can short circuit - jack sensing pin and ground.
- Manufacturing period : July - August 2007



Solution : ◆ Short term solution
- Add an insulator below Rubber (8/18~)
Insulator size : 20mm x 8mm

◆ **Long term solution**

- Change Rubber material from NBR to SILICON (8/19~)

Rubber PN : BA81-04174A

◆ **Service Center & PCB Repair Center guide**

- Check the manufacturing month and insulator near PCMCIA slot.

. Manufacturing month : Check 8th digit (production year) & 9th digit (production month) of product S/N on the bottom.

If the system **manufactured on July ~ August '07, it is possibly affected.**

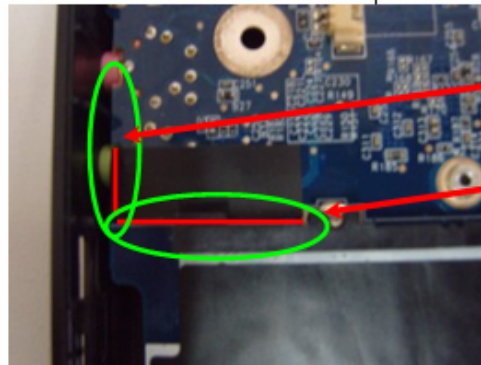
8th Digit	X	Y	A, L	P
Year	2004	2005	2006	2007

9th Digit	1	2	3	4	5	6	7	8	9	A	B	C
Month	Jan	Feb	Mar	Apr	May	Jun	Jul	Aug	Sep	Oct	Nov	Dec

. Insulator : if there is **no insulator near PCMCIA slot as the picture below, it's affected one.**

- If the product is verified to be an affected one, replace Rubber and add insulator as below.

1. Add an insulator on PCB as the picture below,

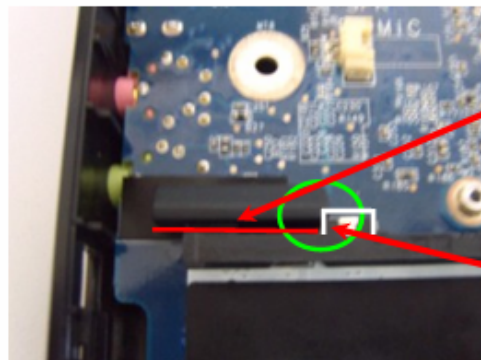


Left side of insulator meets PCB edge

Insulator meets PCMCIA connector

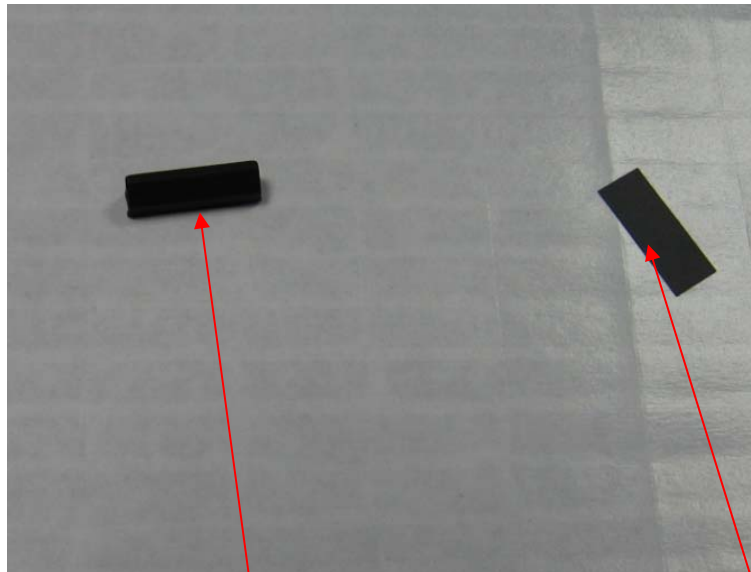
Относится к моделям, произведенным в июле-августе 2007 года

2. Add a rubber on PCB as the picture below,



Add rubber close to PCMCIA connector

Right side of Rubber meets a white line on PCB



Application Date : Immediately
Cut-in Serial No. : None

(Interchangeability code : I.C)

		Old Parts (Before)		New Parts (Changed)		I.C
		SEC PN	Description	SEC PN	Description	
		BA81-04174A	Rubber made of NBR	BA81-04174A	Rubber made of Silicon	C
		None	-	Insulator	Insulator (20mm x 8mm)	E

Type	A type		B type		C type		D type		E type	F type
	Part	Prod.	Part	Prod.	Part	Prod.	Part	Prod.	Parts Additio	Parts Deletion
Interchangeability	Old	→ Early	Old	→ Early	Old	→ Early	Old	→ Early	None → New	Old → delete
	New	→ Late	New	→ Late	New	→ Late	New	→ Late		

Application	Reference ()	Only Defected Units (O)	Whole Units ()	
Attachment	Schematic Diagram ()	Mechanical Diagram ()	Component Lay-out ()	Exploded Views ()
	Firmware ()	Driver ()	Others (O)	None ()

Published by : John Seo **Checked by : SooCheol Shin** **Approved by : Yangho Cho**

Revision (V1.2 : 2007-07-24) ... Customer Satisfaction Group. Overseas Quality Part.

В модели R60 может использоваться память нового производителя A-DATA
(part number 1105-001797)



Service Bulletin

Product :	Note PC	Bulletin No. :	24020070F05
Model :	R60, P500	Bulletin Date :	2007-10-19
Operation Subject :	ASC (<input type="radio"/>) Call center (<input type="radio"/>)	ECN Date :	-
Service Type :	Return w/o repair (<input type="checkbox"/>) Scrap after swap (<input type="checkbox"/>) Rework (Repair) locally (<input type="checkbox"/>)		
Subject :	A-DATA 1GB DDR2 RAM applied		

Notice : ◆ **1GB Memory from a new vendor "A-DATA" applied to R60, P500 series for cost reduction.**
 - PN : 1105-001797
 - Spec. : 1GB DDR2 667Mhz



Application Date : Immediately

Cut-in Serial No. : None

(Interchangeability code : I.C)

		Old Parts (Before)		New Parts (Changed)		I.C
		SEC PN	Description	SEC PN	Description	
		1105-001684	1GB DDR2 667Mhz, Samsung	1105-001797	1GB DDR2 667Mhz, A-DATA	A
		1105-001790	1GB DDR2 667Mhz, Nanya			

Type	A type		B type		C type		D type		E type	F type
Interchangeability	Part	Prod.	Part	Prod.	Part	Prod.	Part	Prod.	Parts Addition	Parts Deletion
	Old	→ Early	Old	→ Early	Old	→ Early	Old	→ Early	None → New	Old → delete
	New	→ Late	New	→ Late	New	→ Late	New	→ Late		

Application	Reference (<input type="checkbox"/>)	Only Defected Units (<input type="checkbox"/>)	Whole Units (<input type="checkbox"/>)
Attachment	Schematic Diagram (<input type="checkbox"/>)	Michanical Diagram (<input type="checkbox"/>)	Component Lay-out (<input type="checkbox"/>)
	Firmware (<input type="checkbox"/>)	Driver (<input type="checkbox"/>)	Others (<input type="checkbox"/>)
			Exploded Views (<input type="checkbox"/>)
			None (<input type="radio"/>)

Published by : John Seo Checked by : SooCheol Shin Approved by : Changho Lee

Revision (V1.2 : 2007-07-24) ... Customer Satisfaction Group. Overseas Quality Part.